

# NAoPri

National Audit of  
Primary Breast Cancer

NAoPri, Clinical Effectiveness Unit

Royal College of Surgeons of England  
38-43 Lincoln's Inn Fields  
London WC2A 3PE

E: [BreastCancerAudits@rcseng.ac.uk](mailto:BreastCancerAudits@rcseng.ac.uk)

T: 020 7869 6610

 NAOpri\_news

## NAoPri Newsletter, January 2025

### Highlights

1

New look  
Quarterly Reports

2

Recent  
publications

3

Upcoming  
Publications

### New look Quarterly Reports

The second NAOpri Quarterly Clinical Indicator Performance Report was published on 9th January 2025. This report has moved from an interactive Excel worksheet to a web-based (RShiny) platform. The report includes results for each NHS breast unit on data completion and key performance indicators.

- 38% of NHS breast units demonstrated  $\geq 90\%$  data completion for staging, 26% had  $\geq 90\%$  data completion for Clinical Nurse Specialist contact, and 36% had  $\geq 90\%$  data completion for WHO performance status.
- There was considerable variation between NHS breast units in rates of immediate reconstruction after mastectomy, including within Cancer Alliances.

Access results for your NHS breast unit [here](#). We value any feedback that you might have.

### Recent Publications

#### NAoPri 2024 Impact Report

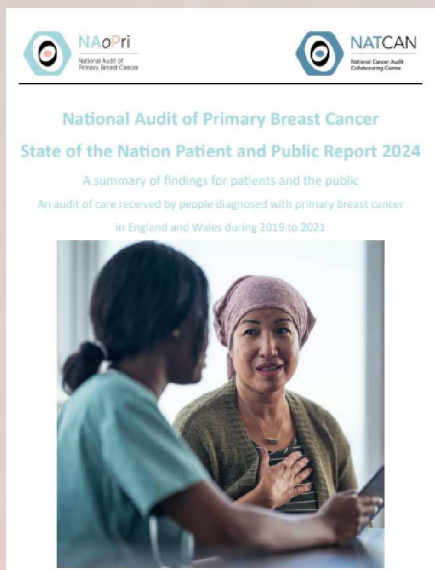
The NAOpri has recently published a [report summarising the audits' impact to date](#). Impact is categorized into national; system; local and public.



#### Patient version of Annual Report

We have published a [patient version of our 1st NAOpri annual State of the Nation Report](#), summarising what we know about primary breast cancer care for a patient and public audience.

This was co-produced with our Patient and Public Involvement Forum and has been awarded a [Plain English Crystal Mark](#).



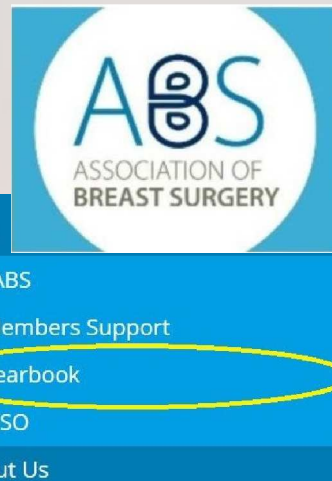
### Upcoming Publications

#### ABS Yearbook

The 2025 [Association of Breast Surgery](#) (ABS) Yearbook is coming soon. The ABS audit section will feature the NAOpri and sister metastatic breast cancer audit [NAoMe](#), highlighting the audits' 2024 publications, key findings, and how healthcare professionals can engage with the audits.

The yearbook will be freely available to ABS members. Just log in to the ABS website and select "Yearbook" under "My ABS" section.

Stay tuned for this valuable resource!



#### COSD Data



The NAOpri will be publishing an update of their key COSD data items for collection 2024/2025 at the end of January. Keep a look out to make sure your organisation's data submissions are complete.

#### NATCAN Annual Progress Report

The NAOpri is a part of the National Cancer Audit Collaborating Centre ([NATCAN](#)). To read about the work of NATCAN commissioned by [HQIP](#), you can download the annual progress report, [here](#).



#### CONTACT US



E-mail any breast audit-specific questions to: [breastcanceraudits@rcseng.ac.uk](mailto:breastcanceraudits@rcseng.ac.uk)

Follow us on X (formerly Twitter): [@NAoPri\\_news](#)



**NATCAN**  
National Cancer Audit  
Collaborating Centre

This email was sent to you by NAOpri, part of the National Cancer Audit Collaborating Centre (NATCAN) based at the Royal College of Surgeons of England. To ensure continued receipt of our emails please add us to your address book or safe list. In accordance with the General Data Protection Regulation (GDPR), NATCAN is committed to protecting your privacy. If you wish to know more please access our [privacy policy](#). If you wish to unsubscribe from all NAOpri communications, please click [here](#). © RCSEng 2024, Registered Charity No. 212808