



NAoMe

National Audit of
Metastatic Breast Cancer

NAoMe, Clinical Effectiveness Unit

Royal College of Surgeons of England
38-43 Lincoln's Inn Fields
London WC2A 3PE

E: breastcanceraudits@rcseng.ac.uk



NAoMe Newsletter, April 2025

Highlights

1 April Quarterly
Report published

2 Contributing
to the Audit

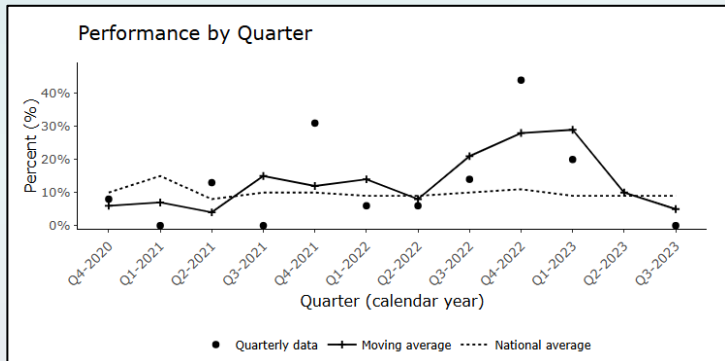
3 ABS Conference
19-20th May Birmingham

April Quarterly Report published

The most recent NAoMe Quarterly Report was published on 10th April 2025 and includes:

- ✓ Two performance indicators: (1) % of people who were discussed at a multi-disciplinary team meeting (MDT) and (2) % of people dying within 30 days of a cycle of systemic anti-cancer therapy (usually chemotherapy).
- ✓ Five data completeness indicators showing performance over the last three years for people with 'de-novo' metastatic breast cancer diagnosed in English NHS trusts.
- ✓ Downloadable reports.
- ✓ A patient Guide to NAoMe Quarterly Reports.

You can access the Quarterly Report [here](#)



Contributing to the Audit

Get involved: review/see where your MDT can help the audit/NAoMe:

- **CNS Assignment:** Ensure each breast cancer patient has a named Clinical Nurse Specialist (CNS) for support. Document it in the COSD record using options under **[CR2050]**.
- **Frailty Assessment for Older Patients:** Following NABCOP's findings, a frailty assessment is recommended for all new patients aged 70 and over, to be recorded under **[BR4500]**. Fitness assessment tool available [here](#).
- **Breast Cancer Recurrence:** The NAoMe audit identified low completeness in the recording of the date of (metastatic) recurrence. Refer to the [COSD data guide](#) to help improve recording within your trust.



NAoMe at the ABS Conference 19-20th May, Birmingham

Join us at the ABS Conference, Birmingham International Convention Centre on 19-20th May 2025.

- Listen to our clinical lead Prof. Kieran Horgan present an update on audit activities: "National Audit of Primary Breast Cancer (NAoPri) and NAoMe update", Session 12.
- Find out about our audit work on patient experience: Session 24 and P123.
- **Meet the team and find out more in the Exhibition Hall: Stand 40, throughout the event.** Find out more & register to attend [here](#).

