

NAoPri

National Audit of
Primary Breast Cancer

NAoPri, Clinical Effectiveness Unit

Royal College of Surgeons of England
38-43 Lincoln's Inn Fields
London WC2A 3PE

E: BreastCancerAudits@rcseng.ac.uk



NAoPri Newsletter, July 2025

Highlights

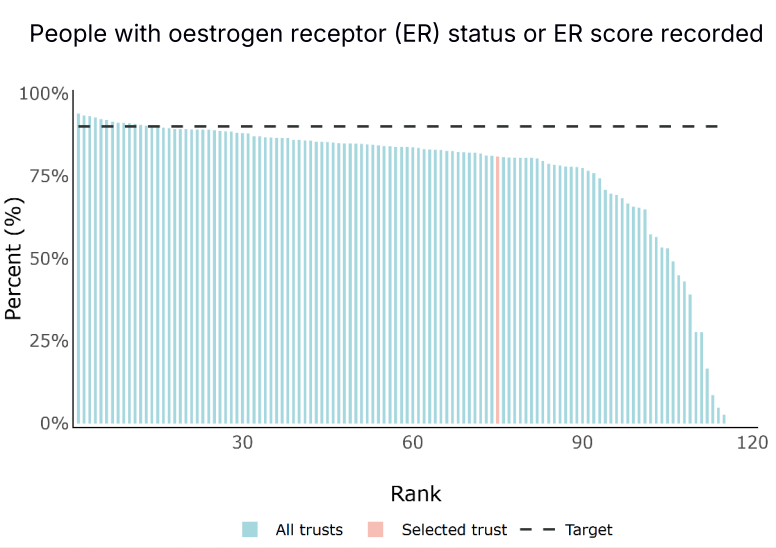
- 1 Quarterly Report
- 2 NAOpri Patient Guide
- 3 Upcoming Publications
- 4 ABS Conference Round-up

July Quarterly Report Published

The most recent NAOpri Quarterly Report was published on 10th July 2025 and includes cancer alliance and individual trust-level data on:

- Three performance indicators: (1) % of people receiving breast cancer surgery within 12 months of diagnosis; (2) % of people recorded as having an immediate reconstruction following a mastectomy; (3) % of people who have a record of having contact with a Clinical Nurse Specialist (CNS).
- Five data completeness indicators
- Downloadable reports.
- A patient Guide to NAOpri Quarterly Reports.

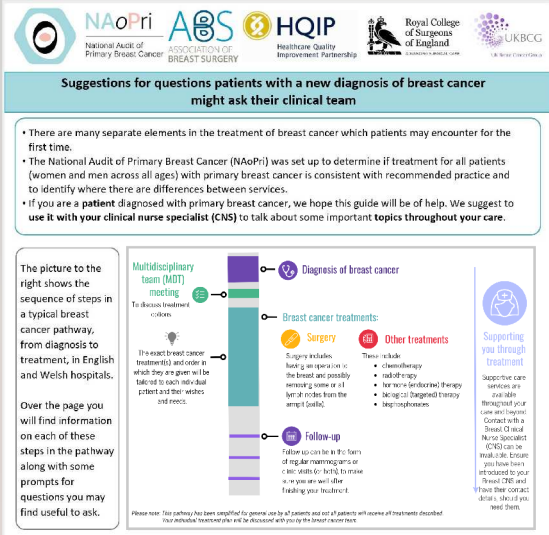
You can access the Quarterly Report [here](#)



NAoPri Patient Guide

This 2-page guide to asking important questions along the breast cancer care pathway was originally designed during the lifetime of the legacy audit the National Audit of Breast Cancer in Older Patients (NABCOP), in collaboration with our patient and charity representatives. It has now been updated with question prompts for all patients to discuss key elements of their care and treatment with their wider breast cancer team, supported by their clinical nurse specialist.

You can access the guide [here](#).



Upcoming Publications



Annual State of the Nation Report

September 2025

A comprehensive annual assessment of patient care quality and outcomes for healthcare professionals and policymakers.

Patient and Public State of the Nation Report

October 2025

Presents findings in an accessible format specifically for patients and the general public.

Read the reports on our [website](#)

NAoPri at the ABS Conference 19-20th May, Birmingham

We were pleased to have a presence at the ABS Annual Meeting in Birmingham, where our team shared updates through poster and oral presentations, as well as at our exhibition stand.

Thank you to all who visited us and expressed interest in our work. We hope you will continue engaging with your data and explore how it can support ongoing quality improvement efforts.



NATCAN
National Cancer Audit
Collaborating Centre

This email was sent to you by NAOpri, part of the National Cancer Audit Collaborating Centre (NATCAN) based at the Royal College of Surgeons of England. To ensure continued receipt of our emails please add us to your address book or safe list. In accordance with the General Data Protection Regulation (GDPR), NATCAN is committed to protecting your privacy. If you wish to know more please access our privacy policy. If you wish to unsubscribe from all NAOpri communications, please click [here](#). © RCSEng 2025, Registered Charity No. 212808