



NLCA

National Lung
Cancer Audit

NLCA, Clinical Effectiveness Unit

Royal College of Surgeons of England
38-43 Lincoln's Inn Fields
London WC2A 3PE

E: NLCA@rcseng.ac.uk

T: 020 7869 6606

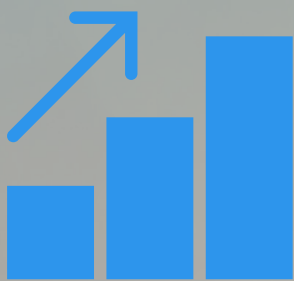
✕ [NLCA_uk](https://www.nlca-uk.org)

NLCA Newsletter, October 2025

Want to hear more?

The NLCA is part of the National Cancer Audit Collaborating Centre (NATCAN). If you want to find out more about NATCAN visit our [new website](#). If you would like to receive regular updates send us an email NATCAN@rcseng.ac.uk

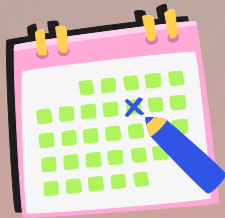
NLCA Quality Improvement intervention



The NLCA is launching its first Quality Improvement (QI) intervention in **October 2025**. We will be working with NHS trusts to try to improve access to Lung Cancer Nurse Specialist (LCNS) care. Every patient with lung cancer should receive LCNS care and we know that LCNSs improve patient experience, access to treatment, and outcomes. NLCA data shows variation in both LCNS provision and recording of LCNS contact across trusts. We will be supporting trusts by sending feedback letters to trusts with lower performance or recent improvements, as well as recognising excellent practice. In addition, we plan to record a catalogue of success to highlight examples of excellent service delivery. Keep an eye on the new [NATCAN website](#) for more information on our QI intervention.

State of the Nation Report 2026

Date for the diary! The NLCA will be publishing its next State of the Nation report on **12 February 2026**, subject to clearance and sign-off. This is earlier than previous years to align better with the professional society conferences, where we present our results. The report will include results for patients diagnosed in England and Wales in 2024. More details to come.

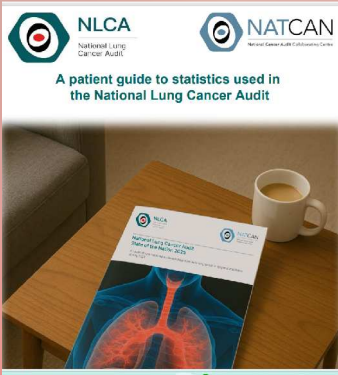


October Quarterly Report

The latest update to the NLCA interactive data dashboard is due to be published in the NLCA pages on the brand new [NATCAN website](#) on **9th October 2025**. The October quarterly data dashboard includes more recent data: patients in England diagnosed up to 31st December 2024. The October dashboard includes a new performance indicator: Proportion of lung cancer patients seen by a Lung Cancer Nurse Specialist (LCNS) (including all patients with lung cancer) which we will use for the NLCA Quality Improvement intervention launching this month (more details above). We hope you find the dashboard useful, and we welcome any feedback from users to help us refine the dashboards further.

Patient Guide to NLCA Statistics

The NLCA has published a new resource for patients and members of the public: [Patient Guide to NLCA Statistics](#). This guide is intended to help patients, carers and the public better understand the numbers and statistics used by the NLCA to report lung cancer care.



NATCAN
National Cancer Audit
Collaborating Centre

This email was sent to you by NLCA, part of the National Cancer Audit Collaborating Centre (NATCAN) based at the Royal College of Surgeons of England. To ensure continued receipt of our emails please add us to your address book or safe list.
In accordance with the General Data Protection Regulation (GDPR), NATCAN is committed to protecting your privacy. If you wish to know more please access our [privacy policy](#). If you no longer wish to receive any messages please unsubscribe. © RCS 2023, Registered Charity No. 212808