

Improving Access to LCNS Care

National Lung Cancer Audit Quality Improvement Initiative

Why this matters

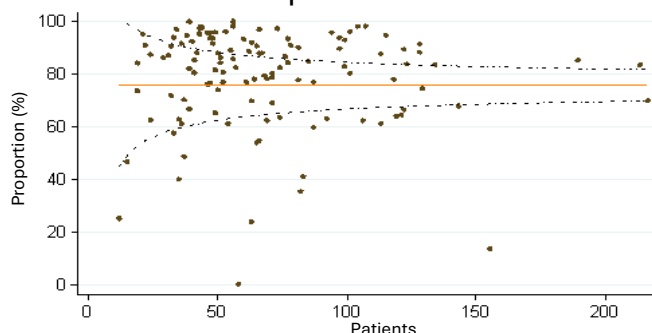
- Every patient with lung cancer should receive Lung Cancer Nurse Specialist (LCNS) care
- Care by a LCNS improves patient experience, access to treatment, and outcomes
- NLCA data shows variation in both LCNS provision & recording of LCNS contact across trusts

Our Goals

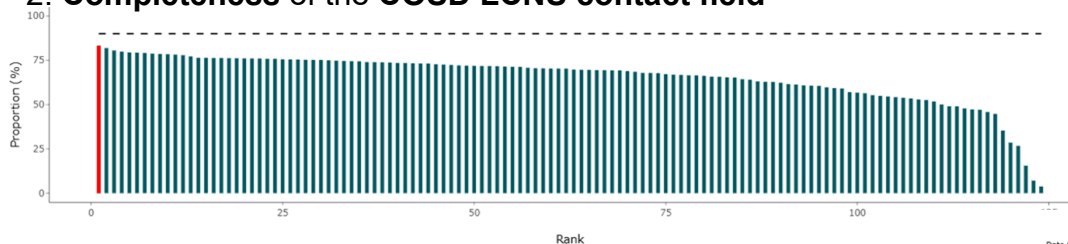
- Increase the **proportion of patients receiving care from a LCNS**
- Improve the **completeness of LCNS data** in Cancer Outcomes and Services Data set (COSD)
- Support NHS trusts to identify barriers and **share solutions** that improve LCNS access for all patients

Key Indicators:

1. Proportion of **all patients** with lung cancer recorded as having **seen an LCNS**



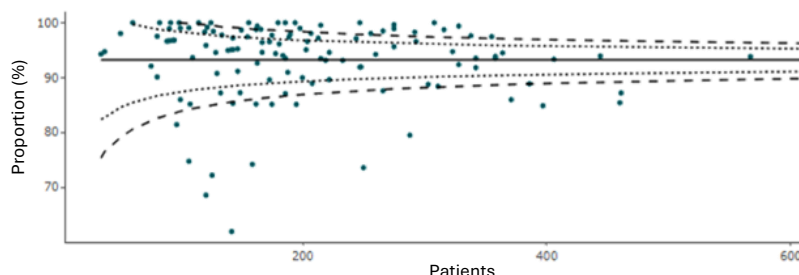
2. Completeness of the COSD LCNS contact field



0 / 124 trusts reached the 90% data completeness target for LCNS in 2023

3. Proportion of patients with lung cancer recorded as having **seen an LCNS** (among those with **completed** LCNS contact field in COSD)

92 / 124 trusts reached the 90% LCNS contact target (among patients with a completed COSD field) in 2023



How we're supporting trusts

- **Feedback letters** for trusts with lower performance or recent improvements
- **Recognition** of excellent practice and recent improvement
- **Catalogue of success:** examples of effective service delivery and QI initiatives
- Providing trust-level results through the [NLCA dashboard](#)

What you can do

- Review your results on the [NLCA dashboard](#)
- Local meetings to discuss your local LCNS access and data quality
- Share examples of improvement or good practice with the NLCA team

Together we can improve care

By working collaboratively, we can ensure that every patient with lung cancer benefits from the support of an LCNS

Contact us:

natcan.org.uk/audits/lung
nlca@rcseng.ac.uk