



**NPCA**

National Prostate  
Cancer Audit



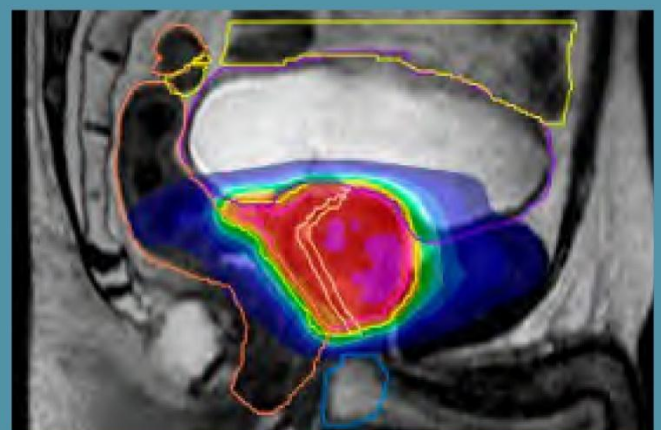
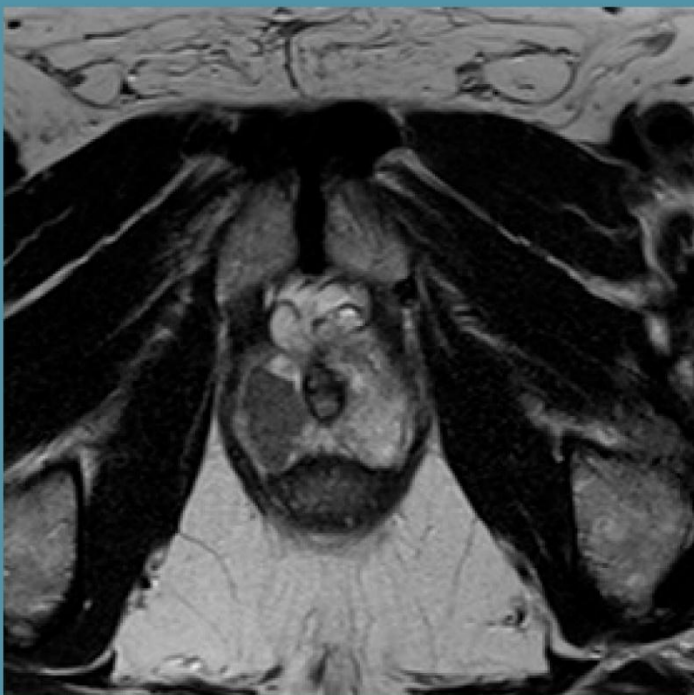
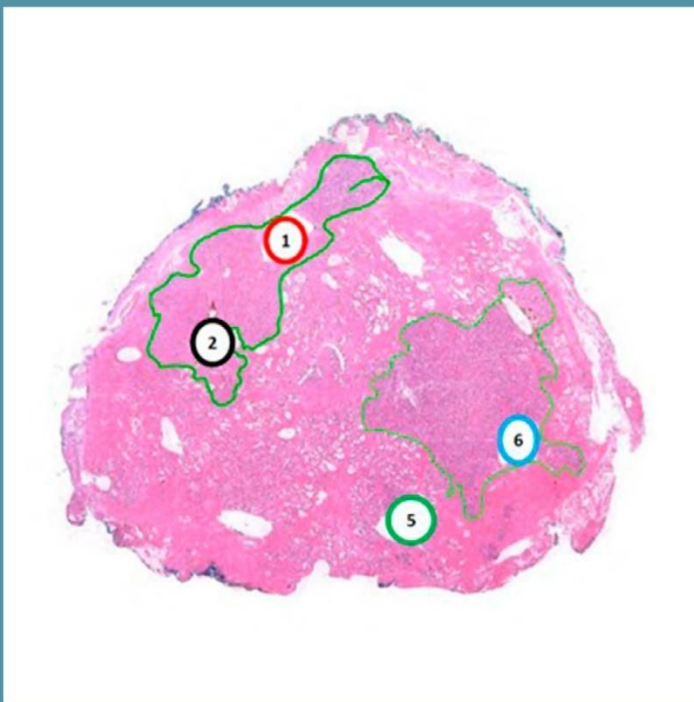
**NATCAN**

National Cancer Audit  
Collaborating Centre

## National Prostate Cancer Audit State of the Nation Report - Appendix

An audit of the care received by men diagnosed with prostate cancer in England and Wales  
from 01/01/2019 to 31/12/2024

Published October 2025



## 1. Acknowledgements

The National Prostate Cancer Audit (NPCA) is part of the National Cancer Audit Collaborating Centre (NATCAN) at the Clinical Effectiveness Unit (CEU) of the Royal College of Surgeons of England. NATCAN is a new national centre of excellence to strengthen NHS cancer services by looking at treatments and patient outcomes across the country. NATCAN is commissioned by the Healthcare Quality Improvement Partnership (HQIP) on behalf of NHS England and the Welsh Government as part of the National Clinical Audit and Patient Outcomes Programme (NCAPOP).

The audit is a collaboration between the Clinical Effectiveness Unit (CEU) at the Royal College of Surgeons of England (RCS), the British Association of Urological Surgeons (BAUS) and the British Uro-oncology Group (BUG). We would like to thank BAUS and BUG for their continued professional guidance and for raising awareness amongst urological and uro-oncological colleagues.

The NPCA's [Clinical Reference Group](#) (CRG) is formed of members representing patient groups and professionals. We would like to thank all CRG members for sharing their clinical and policy expertise and experience, and for providing valuable feedback throughout the different stages of the audit.

We would also like to thank all urologists, uro-oncologists and their clinical and non-clinical teams at NHS Trusts in England and Health Boards in Wales who collected and submitted data for the audit. Your support is key to enabling the NPCA to evaluate the care that men receive following a diagnosis of prostate cancer in England and Wales and whether this care reflects recommended guidelines and quality standards.

The NPCA compares NHS Providers in England and Wales and provides these results to underpin quality improvement activities. We are grateful to the National Cancer Registration and Analysis Service (NCRAS) which is part of the National Disease Registration Service, NHS England (NHSE) and the Wales Cancer Network, Public Health Wales for supporting routine cancer data submissions from Trusts and Health Boards and for supplying data for this report. We particularly appreciate the efforts of the cancer intelligence analysts and cancer information specialists at NCRAS and the Wales Cancer Network who supplied the data during the COVID-19 pandemic.

We would also like to thank all members of the NPCA Patient and Public Involvement (PPI) Forum for providing advisory support and ensuring the voice of patients is central to the direction and delivery of the NPCA. A lay report summarising the key results has been developed in consultation with the NPCA PPI Forum and is published simultaneously.

## 2. Supplementary tables: national results

**Table S1. Number of men diagnosed with prostate cancer in England during 2019-2024 captured in the Rapid Cancer Registration Dataset.**

Year	Number of men diagnosed
2019	43,584
2020	33,044
2021	39,859
2022	49,974
2023	53,462
2024	58,218

**Table S2. Number of men diagnosed with prostate cancer in Wales during 2021-2023.**

Year	Number of men diagnosed
2021	1,996
2022	2,551
2023	2,402

**Table S3. Number of men who received a radical prostatectomy in England during 2019-2024.**

Year	Number of men who received radical prostatectomies
2019	7,198
2020	5,590
2021	5,825
2022	7,381
2023	8,524
2024	9,590

**Table S4. Number of men who received radical prostate radiotherapy in England during 2019-2024.**

Year	Number of men who received radical prostate radiotherapy
2019	13,805
2020	12,282
2021	12,089
2022	14,958
2023	18,385
2024	20,782

**Table S5. Number of men who received a radical prostatectomy in Wales during 2021-2023.**

Year	Number of men who received radical prostatectomies
2021	228
2022	255
2023	314

**Table S6. Number of men who received radical prostate radiotherapy in Wales during 2021-2023.**

Year	Number of men who received radical prostate radiotherapy
2021	664
2022	830
2023	935

**Table S7. The number of men starting different types of radiotherapy in England, from 2019 to 2024.**

	Conventional		Hypo-fractionated 49-61Gy in up to 20 fractions		Ultra-hypofractionated 34.1-37.9Gy in 6 fractions (including 36Gy/6 fractions)		SBRT 35-50Gy in 5 fractions (including 36.25Gy/5 fractions)*		Total	
2019	2,823	22%	9,865	77%	84	0.7%	44	0.3%	12,816	100%
2020	1,897	17%	8,996	81%	116	1.0%	164	1%	11,173	100%
2021	1,475	14%	8,816	81%	134	1.2%	452	4%	10,877	100%
2022	1,707	13%	11,069	82%	164	1.2%	556	4%	13,496	100%
2023	1,719	10%	13,978	84%	74	0.4%	949	6%	16,720	100%
2024	1,281	7%	16,258	85%	136	0.7%	1,462	8%	19,137	100%

Acronym: Gy = Gray; SBRT = Stereotactic Body Radiation Therapy. \*Likely under-reported, for further investigation.

**Table S8. The number of men (and proportion of total for that year) with prostate cancer starting different types of systemic therapy within 16 weeks of diagnosis in England, from 1<sup>st</sup> January 2019 to 30<sup>th</sup> September 2024.**

	Abiraterone		Apalutamide		Docetaxel		Enzalutamide		Total	
2019	9	0.4%	0	0%	2,042	99%	7	0.3%	2,058	100%
2020	67	3%	1	0%	990	47%	1,053	50%	2,111	100%
2021	143	5%	101	3%	1,030	33%	1,806	59%	3,080	100%
2022	77	3%	665	22%	1,066	36%	1,160	39%	2,968	100%
2023	105	4%	903	32%	762	27%	1,073	38%	2,843	100%
2024*	211	9%	776	32%	538	22%	901	37%	2,426	100%

\* 9 months data

**Table S9. Data completeness for men diagnosed with prostate cancer in England during 2022 captured in the National Cancer Registration Dataset.**

Data item	Percentage of men with data item complete
Ethnicity	87%
Deprivation	100%
Performance status	63%
PSA	60%
Gleason score	81%
TNM (all complete)	70%

**Table S10. Data completeness for men diagnosed with prostate cancer in Wales between 1<sup>st</sup> April 2023 and 31<sup>st</sup> December 2023.**

Data item	Percentage of men with data item complete
Ethnicity	35%
Deprivation	87%
Performance status	99%
PSA	91%
Gleason score	87%
TNM (all complete)	62%

**Table S11. Patient and diagnostic characteristics for men newly diagnosed with prostate cancer in England between 1<sup>st</sup> January 2022 and 31<sup>st</sup> December 2022 and in Wales between 1<sup>st</sup> April 2023 and 31<sup>st</sup> December 2023.**

<b>Data variable</b>	<b>England</b>		<b>Wales</b>	
	<b>N</b>	<b>%</b>	<b>N</b>	<b>%</b>
<i>Time period covered</i>	<i>1 Jan 2022 - 31 Dec 2022</i>		<i>1 Apr 2023 - 31 December 2023</i>	
No. of men with new diagnosis of prostate cancer	53,971		2,394	
<b>Age</b>				
<60	6,854	13%	241	10%
60-69	17,296	32%	734	31%
70-79	21,681	40%	1,056	44%
≥80	8,140	15%	363	15%
Total	53,971	100%	2,394	100%
Missing	0	(0%)	0	(0%)
<b>Ethnicity</b>				
Asian or Asian British	1,201	3%	<5	<1%
Black, Black British, Caribbean or African	2,348	5%	<5	<1%
Mixed or multiple ethnic groups	319	1%	<5	<1%
White	42,152	90%	828	99%
Other	804	2%	<5	<1%
Total	46,824	100%	839	100%
Missing	7,147	(13%)	1,555	65%
<b>Indices of multiple deprivation (IMD) of LSOA</b>				
1 (least deprived)	13,553	25%	451	22%
2	12,779	24%	489	23%
3	11,371	21%	473	23%
4	9,228	17%	379	18%
5 (most deprived)	7,040	13%	294	14%
Total	53,971	100%	2,086	100%
Missing	0	(0%)	308	13%
<b>Performance status</b>				
0	24,577	72%	1,268	54%
1-2	8,696	26%	1,025	43%
≥3	677	2%	67	3%
Total	33,950	100%	2,360	100%
Missing	20,021	(37%)	34	(1%)
<b>Charlson score</b>				
0	39,995	74%	1,798	75%
1	9,170	17%	385	16%
≥2	4,806	9%	211	9%
Total	53,971	100%	2,394	100%
Missing	0	(0%)	0	(0%)
<b>Prostate Specific Antigen (PSA)</b>				
<10	16,459	51%	989	45%
10-19	6,694	21%	526	24%
≥20	9,184	28%	666	31%
Total	32,337	100%	2,181	100%
Missing	21,634	(40%)	213	(9%)

<b>Gleason score</b>				
6	8,190	19%	566	27%
7	23,723	54%	984	47%
≥8	11,820	27%	527	25%
Total	43,733	100%	2,077	100%
<i>Missing</i>	10,238	(19%)	317	(13%)
<b>T stage</b>				
T1	3,396	8%	131	6%
T2	21,719	51%	1,129	51%
T3	15,826	37%	728	33%
T4	2,048	5%	217	10%
Total	42,989	100%	2,205	100%
<i>Missing</i>	10,982	(20%)	189	(8%)
<b>N stage</b>				
N0	37,302	89%	1,748	82%
N1	4,680	11%	381	18%
Total	41,982	100%	2,129	100%
<i>Missing</i>	11,989	(22%)	265	(11%)
<b>M stage</b>				
M0	35,306	86%	1,171	73%
M1	5,705	14%	442	27%
Total	41,011	100%	1,613	100%
<i>Missing</i>	12,960	(24%)	781	(33%)
<b>Risk group</b>				
Low risk	5,453	13%	377	17%
Intermediate	14,490	33%	648	29%
High-risk/locally advanced	17,966	41%	764	34%
Metastatic	5,705	13%	442	20%
Total	43,614	100%	2,231	100%
<i>Insufficient</i>	10,357	(19%)	163	(7%)
<b>Cambridge Prognostic Group (CPG)</b>				
CPG1	6,512	18%	392	18%
CPG2	5,746	16%	378	17%
CPG3	3,266	9%	248	11%
CPG4	5,059	14%	305	14%
CPG5	6,972	20%	306	14%
N1	2,032	6%	109	5%
M1	5,705	16%	442	20%
Total	35,292	100%	2,180	100%
<i>Insufficient</i>	18,679	(35%)	214	(9%)

Acronyms: PSA = Prostate Specific Antigen; TNM = Tumour, Nodes, Metastases Classification of Malignant Tumours; RCRD = Rapid Cancer Registration Dataset. N1 = Nodes/Nodal disease. M1 = metastatic disease.

**Table S12. Treatment characteristics for men receiving radical radiotherapy or prostatectomy in England over the period of 1<sup>st</sup> January 2024 and 31<sup>st</sup> December 2024 and in Wales over the period of 1<sup>st</sup> January 2023 and 31 December 2023.**

Data variable	England		Wales	
	N	%	N	%
Time period covered	1 Jan 2024 – 31 Dec 2024		1 Jan 2023 - 31 Dec 2023	
Radical prostatectomy information				
No. of men undergoing radical prostatectomy	9,590		313	
Prostatectomy type				
Robotic	9,312	97%	246	81%
Laparoscopic	117	1%	45	15%
Open	161	2%	12	4%
Total	9,590	100%	303	100%
Missing	0	(0%)	10	(3%)
Lymphadenectomy performed				
No	8,459	88%	156	65%
Yes	1,131	12%	83	35%
Total	9,590	100%	239	100%
Missing	0	(0%)	74	(24%)
Radical radiotherapy information				
No. of men undergoing radical radiotherapy	20,782		935	
Radiotherapy modality				
Intensity Modulated Radiation Therapy	19,852	96%	669	99%
3D conformal	930	4%	8	1%
Total	20,782	100%	677	100%
Missing	0	(0%)	258	(28%)
Planned radiotherapy region				
Prostate and/or seminal vesicles	15,438	76%	466	67%
Whole pelvis incl. lymph nodes	4,889	24%	226	33%
Total	20,327	100%	692	100%
Missing	455	(2%)	243	(26%)