

# NAoPri

National Audit of  
Primary Breast Cancer

**NAoPri**, Clinical Effectiveness Unit  
Royal College of Surgeons of England  
38-43 Lincoln's Inn Fields  
London WC2A 3PE

E: [BreastCancerAudits@rcseng.ac.uk](mailto:BreastCancerAudits@rcseng.ac.uk)

T: 020 7869 6610



## NAoPri Newsletter, January 2026

### Highlights

1

Quarterly Reports

2

Events

3

Publications

### Quarterly Report Update

We are pleased to share that the quarterly Data Dashboards from the National Audit of Primary Breast Cancer (NAoPri) have been updated, now covering the period Q4 2021 – Q3 2024.

**New performance indicator:** *"Percentage of people who received neo-adjuvant chemotherapy amongst those with stage 2-3A, who are triple negative or HER2 positive, and have had surgery within 12 months of diagnosis".* We encourage you to review your results and the associated methodology.

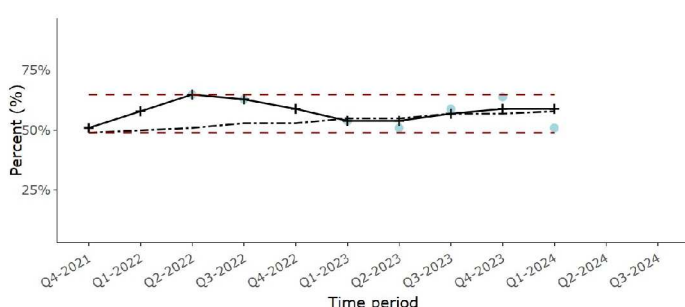
We have also added confidence limits for all performance indicators (for both Trusts and Cancer Alliances), which provide additional context for interpreting your results.

Access the dashboards [here](#)

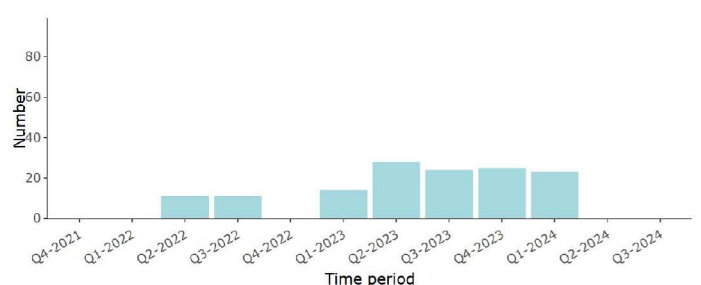
National Audit of Primary Breast Cancer - Quarterly Report (01-10-2021 to 30-09-2024)

Percentage of people who received neo-adjuvant chemotherapy amongst those with stage 2-3A, who are triple negative or HER2 positive, and have had surgery within 12 months of diagnosis at Cheshire and Merseyside Cancer Alliance

Performance



Case volume



### Events

#### The UK Interdisciplinary Breast Cancer Symposium (UKIBCS ) 19th & 20th January 2026

It was a pleasure to have a presence at [UKIBCS](#) in Birmingham, where our team shared updates through oral presentations, as well as at our exhibition stand.

Thank you to all who visited us and expressed interest in our work. We hope you will continue engaging with your data and explore how it can support ongoing quality improvement efforts.



### Upcoming events

Our clinical lead Prof. Kieran Horgan will be presenting data from NAoPri at the following events:

- **East of England Cancer Alliance** (online meeting), 9th February 2026.
- **East Midlands Cancer Alliance** (online meeting), 13th February 2026.
- **Thames Valley Cancer Alliance** (regional meeting), 16th March 2026.

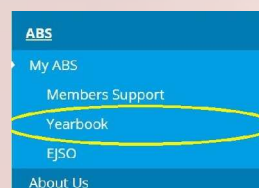
### Publications

#### ABS Yearbook

The 2026 [Association of Breast Surgery](#) (ABS) Yearbook is due to be published in the first week of February 2026.

This year's core audit section will feature detailed summaries from [NAoPri](#) and its companion metastatic breast cancer audit, [NAoMe](#), highlighting key findings and recommendations from the 2025 State of the Nation publications.

The yearbook will be freely available to all ABS members.



To access the Yearbook, simply log in to the ABS website and navigate to the "My ABS" section, where you will find the link under "Yearbook".

Keep an eye out for this valuable update to your library of clinical resources!

To stay up to date with all NAoPri activities, please follow us on our [LinkedIn Page](#)



**NATCAN**  
National Cancer Audit  
Collaborating Centre

This email was sent to you by NAoPri, part of the National Cancer Audit Collaborating Centre (NATCAN) based at the Royal College of Surgeons of England. To ensure continued receipt of our emails please add us to your address book or safe list.  
In accordance with the General Data Protection Regulation (GDPR), NATCAN is committed to protecting your privacy. If you wish to know more please access our [privacy policy](#). If you wish to unsubscribe from all NAoPri communications, please click [here](#). © RCSEng 2026, Registered Charity No. 212808