

# NLCA

National Lung  
Cancer Audit

NLCA, Clinical Effectiveness Unit

Royal College of Surgeons of England  
38-43 Lincoln's Inn Fields  
London WC2A 3PE

E: [NLCA@rcseng.ac.uk](mailto:NLCA@rcseng.ac.uk)

T: 020 7869 6606



[nlca-natcan.bsky](https://twitter.com/nlca-natcan.bsky)

X [NLCA\\_uk](#)



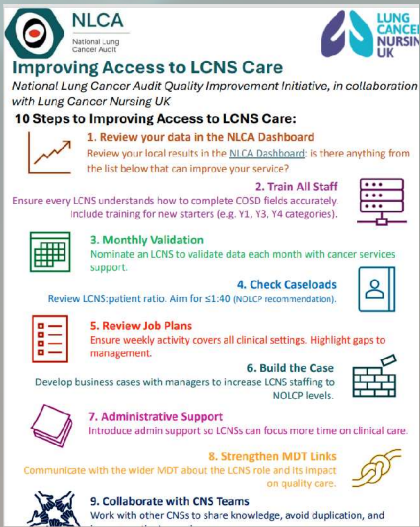
[LinkedIn](#)

## NLCA Newsletter, January 2026

### Want to hear more?

The NLCA is part of the National Cancer Audit Collaborating Centre (NATCAN). If you want to find out more about NATCAN visit our [new website](#). If you would like to receive regular updates send us an email [NATCAN@rcseng.ac.uk](mailto:NATCAN@rcseng.ac.uk)

### NLCA Quality Improvement (QI) intervention



The NLCA launched our **Quality Improvement (QI) intervention** at the start of November 2025. We are working with NHS trusts to try to **improve access to Lung Cancer Nurse Specialist (LCNS) care**. NLCA data shows variation in both LCNS provision and recording of LCNS contact across trusts. For the first quarter, we sent feedback letters to 14 trusts with either lower performance or recent improvements, as well as recognising those who demonstrated excellent practice. **Thank you to those trusts who have already returned their completed proformas/action plan templates**. Later this month, we will be contacting the next tranche and then every quarter going forward. This will help us to build a catalogue of success to highlight examples of excellent service delivery. For more information, please see our [QI intervention posters](#) on the NATCAN website. Thank you to Lung Cancer Nursing UK (LCNUK) for their ongoing support and collaboration.

### RCR webinar

Take a listen to **Dr John Conibear**, NLCA Clinical Lead – Oncology, presenting at a **webinar on 12th November 2025** hosted by the Royal College of Radiologists (RCR). He shared important details on the most recent NLCA reporting, data collection and impact of the audit. The recording can be found [here](#).

### January data dashboard

The latest update to the [NLCA interactive data dashboard](#) was published on our website on **8th January 2026**. The January quarterly data dashboard includes more recent data: **patients in England diagnosed up to 31st March 2025**. As always, we hope you find the dashboard useful and welcome any feedback from users to help us refine the dashboards further ([nlca@rcseng.ac.uk](mailto:nlca@rcseng.ac.uk)).

### NLCA State of the Nation Report 2026

The **NLCA State of the Nation Report 2026** is due to be published on our [website](#) on **12th February 2026**, subject to clearance and sign-off. This is earlier than previous years to align better with the professional society conferences, where we present our results. The report will summarise the performance of lung cancer services in England and Wales and will include **patients diagnosed in 2024**. The report includes five recommendations for trusts and health boards to work towards, and a local action plan template will be provided to help with this. Alongside this, we will be publishing a methodology supplement, a State of the Nation 2026 data dashboard, full data tables and a patient and public version of the State of the Nation Report.



NATCAN  
National Cancer Audit  
Collaborating Centre

This email was sent to you by NLCA, part of the National Cancer Audit Collaborating Centre (NATCAN) based at the Royal College of Surgeons of England. To ensure continued receipt of our emails please add us to your address book or safe list. In accordance with the General Data Protection Regulation (GDPR), NATCAN is committed to protecting your privacy. If you wish to know more please access our [privacy policy](#). If you no longer wish to receive any messages please unsubscribe. © RCS 2023, Registered Charity No. 212808