

# NAoPri

National Audit of  
Primary Breast Cancer

NAoPri, Clinical Effectiveness Unit  
Royal College of Surgeons of England  
38-43 Lincoln's Inn Fields  
London WC2A 3PE

E: [BreastCancerAudits@rcseng.ac.uk](mailto:BreastCancerAudits@rcseng.ac.uk)  
T: 020 7869 6610



## NAoPri Newsletter, April 2026

### Highlights

- 1 Quarterly Reports
- 2 Audit Contributions
- 3 Events
- 4 Publications

### Quarterly Report Update

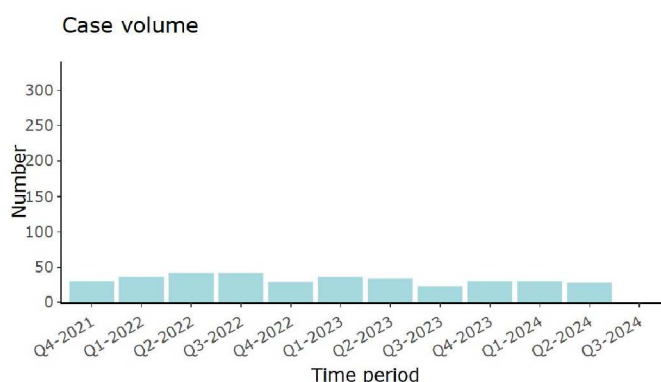
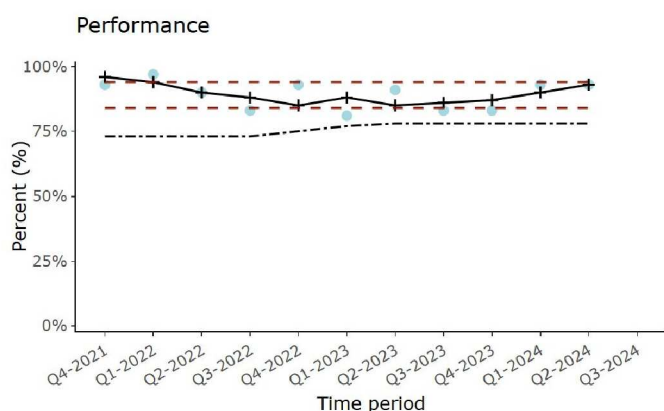
The CNS indicator is now more timely and data is now provided for all quarters in the dashboard, due to recent improvements to data flows carried out by NDRS.

A new data completeness indicator is published showing the percentage of people with data for all three of ER status, HER2 status and stage. The audits will use this to determine if people received appropriate treatments (e.g., use of neo-adjuvant chemotherapy). We encourage teams to review their results and the supporting methodology ahead of the next quarterly release. Access the dashboards [here](#)

National Audit of Primary Breast Cancer - Quarterly Report (01-10-2021 to 30-09-2024)

Percentage of people who had contact with a Clinical Nurse Specialist (CNS) recorded as 'yes'

The latest quarter has been omitted due to sub-optimal data linkage.



#### Contributing to the Audit

The [NAoPri Quality Improvement Plan](#) sets out five goals that guide local improvement activity: supporting timely movement through the care pathway, reducing unwarranted variation in surgery and non surgical treatments, improving access to breast reconstruction, and improving outcomes for people with primary breast cancer.

To help services monitor progress, the audit has identified ten indicators aligned with clinical guidelines and national standards. We encourage teams to review their results within the dashboard and use the QI Action Plan Template to structure local discussions and actions that support these goals.

#### Upcoming events

[HQIP Clinical Audit Awareness Week 2026](#)

22nd to 26th June, Online

[ABS Conference 2026](#)

8th to 9th June, SEC Glasgow

NAoPri is no longer posting on X (Twitter) Follow us on:

**LinkedIn** <https://linkedin.com/showcase/naopri-natcan>

**Bluesky** <https://bsky.app/profile/naopri-natcan.bsky.social>

#### New Research Spotlight

[Evaluation of methods to classify ipsilateral breast tumour recurrences as local recurrence or new primary tumour](#)

This recent publication from colleagues across the NAoPri and NAoMe teams explores different approaches for classifying ipsilateral breast tumour recurrences as either a local recurrence or a new primary tumour. The study, led by S. Blacker and collaborators, compares commonly used classification methods and examines how these influence clinical interpretation and audit reporting. This work provides useful evidence to support more consistent recording of recurrence events across services.

#### New Impact Report

This edition highlights national progress in the quality of primary breast cancer care, growing contributions to research and policy, and strengthened support for local improvement. Enhanced dashboards, data updates and focused work on immediate breast reconstruction continue to help organisations understand variation and improve outcomes.

Read it [here](#). (HQIP approval pending)



**NATCAN**  
National Cancer Audit  
Collaborating Centre

This email was sent to you by NAoPri, part of the National Cancer Audit Collaborating Centre (NATCAN) based at the Royal College of Surgeons of England. To ensure continued receipt of our emails please add us to your address book or safe list. In accordance with the General Data Protection Regulation (GDPR), NATCAN is committed to protecting your privacy. If you wish to know more please access our [privacy policy](#). If you wish to unsubscribe from all NAoPri communications, please click [here](#). © RCoSEng 2026, Registered Charity No. 212808